

ROUGH-TERRAIN CRANE RT75



ZOOMLION

en.zoomlion.com



PT. UNITED EQUIPMENT INDONESIA

OFFICE & WORKSHOP

Jl. Raya Cakung Cilincing Kav. 203
Jakarta Timur 13910, INDONESIA
Marketing : +62-812 8866 5222
Product Support : +62-812 1812 9222
Customer Service: +62-812 9789 3222
P : +62-21 4683 3232 (Hunting)
F : +62-21 461 5466
UniQcall : 1500 - 163
www.uniquip.co.id

BRANCH OFFICES

MEDAN : +62-821 6683 3222
PEKANBARU : +62-851 0878 4222
PALEMBANG : +62-851 0132 9222
SEMARANG : +62-24 7643 8379
SURABAYA : +62-31 9914 8851
PONTIANAK : +62-812 8742 9778
BANJARMASIN : +62-811 5569 222
BALIKPAPAN : +62-851 0022 3322
MAKASSAR : +62-812 9881 0501
BALI : +62-361 471 1039
MATARAM : +62-370 756 1897
KENDARI : +62-401 308 2972
MANADO : +62-822 8959 0222



FOLLOW US ON : UNIQUIPID

Features

Maneuverable and robust drive

1. Four-wheel drive and four-wheel steer chassis
2. Fully hydraulic steering system
3. Variable steering modes, front-wheel steer, four-wheel steer and crab steer; short vehicle length and small turning radius provide the crane with maximum maneuverability and flexibility in narrow job sites.

Excellent off-road capability

Big ground clearance and departure / approach angle offer excellent off-road capability.

Strong gradeability

1. Cummins electronically-controlled engine, automated transmission and steerable drive axles provide reliable power output
2. Even in the condition of abrupt road resistance, the engine can also be functional
3. Four-wheel drive, hydraulic suspension and special tires optimize the vehicle's drive performance to its maximum, suitable for any bad roads and job sites.

Pick-and-carry operations

1. The rough terrain crane has the ability to pick and carry loads, thus improves the working efficiency greatly
2. The crane can also carry out "On tires" Lifts without extending the outrigger beams in narrow job sites
3. Superior pick-and-carry ability during short-distance transit can bring great convenience to the users.

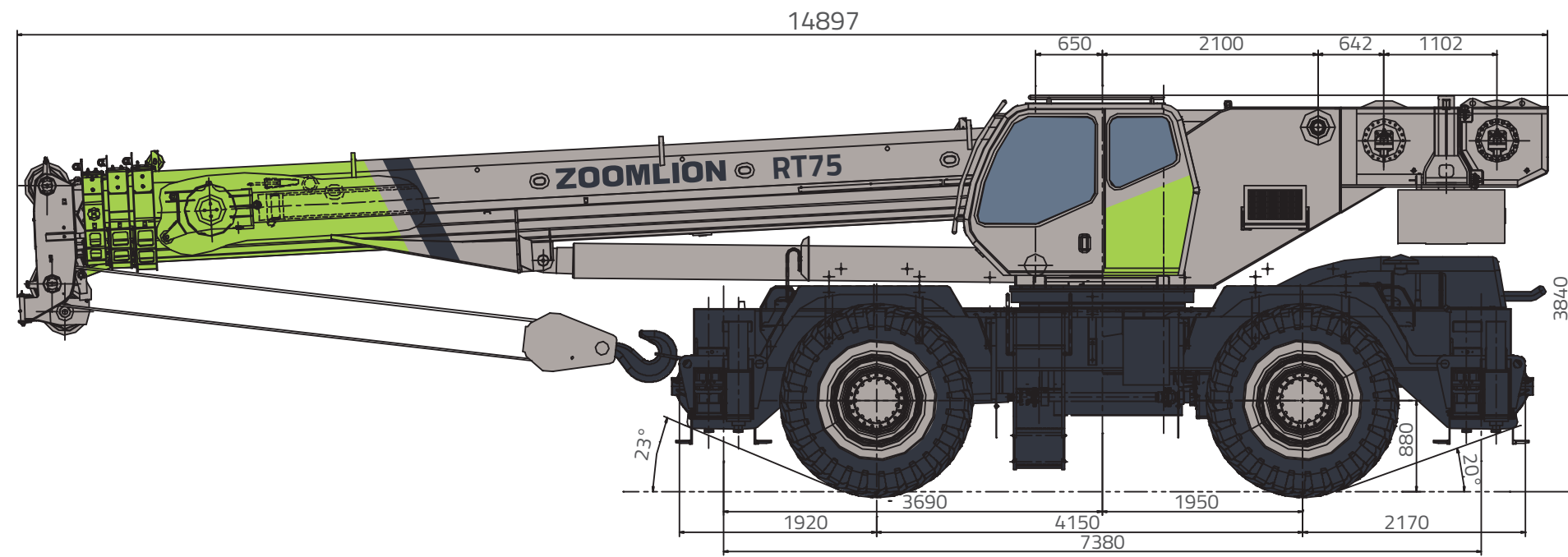
Single cab design

1. Single cab design with large skylight provides large field of view
2. Air-cushioned seat suits to all types of figures, which can release the driver's or operator's fatigue, thus improves the working efficiency
3. The crane is fitted with air conditioning, suitable for all-weather work
4. Digital display and keyboard units, advanced data bus technology, error check and audible & acoustic alarm ensure the safety and high efficiency of the operation.

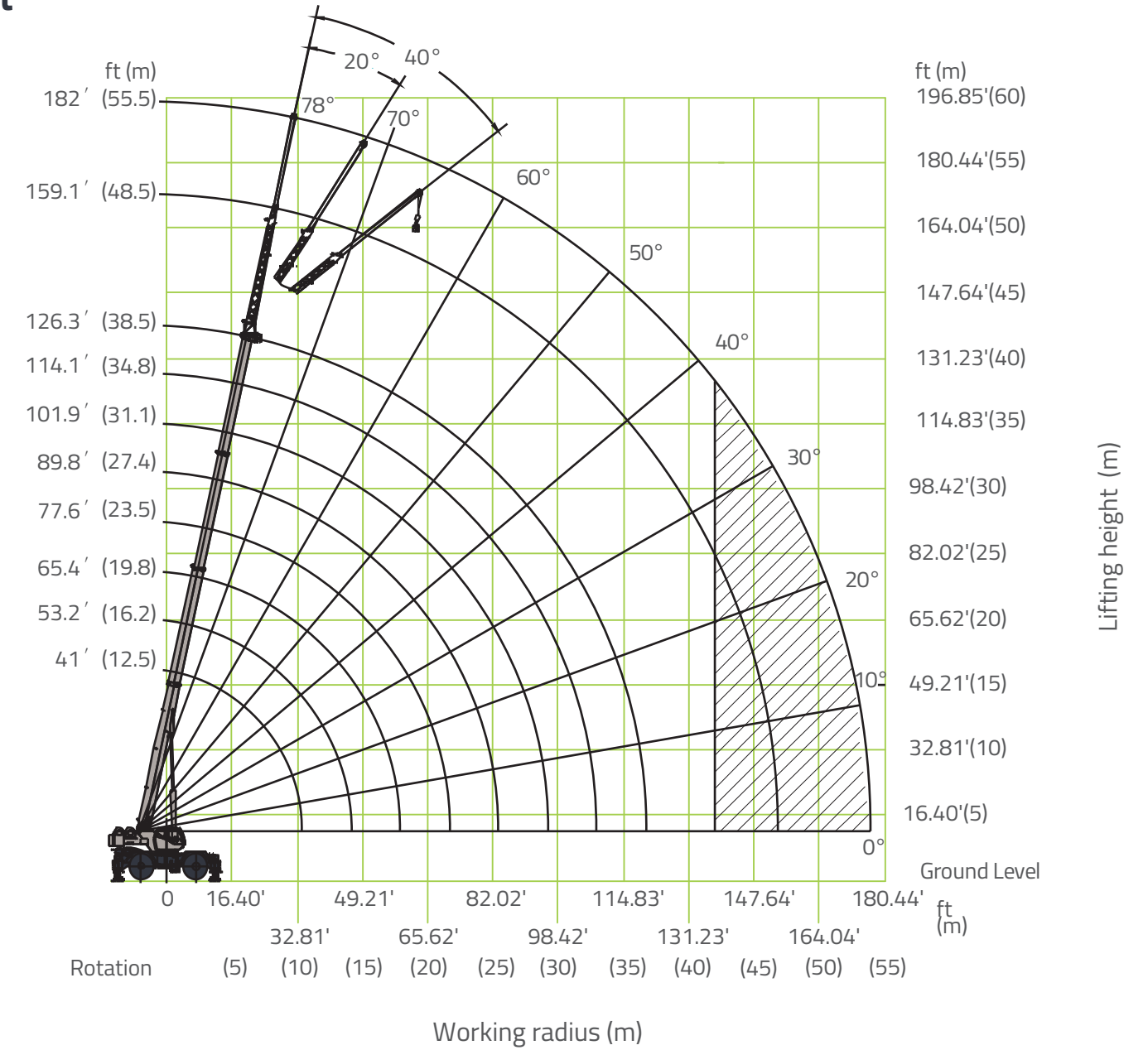
Technical Data

	Item	Unit	Value
Work performance	Max. rated lift capacity × work radius	kg.m	75000×3.0
	Max. load moment of basic boom	kN.m	2814
	Max. load moment of fully extended main boom	kN.M	1184
	Max. lift height of fully extended main boom	m	41
	Max. lift height of jib	m	56.8
Dimensions	Overall dimensions (L×W×H)	mm	14897×3395×3840
	Outrigger spread (L×W)	mm	7380×1300
	Main boom length (Fully retracted fully extended)	mm	12500~38500
	Jib length (Jib section 1,jib sections 1+2)	mm	10000~170000
	Boom angle	°	-3~78
	Swing range	°	360° unlimited swing (Full range)
Work speeds	Max. hoist rope speed (Main winch)	m/min	125
	Min. boom extend time	s	110
	Min. boom retract time	s	90
	Min. boom derrick up time	s	80
	Min. boom derrick down time	s	70
	Swing speed	r/min	0~2
Hydraulic system	Rated work pressure	MPa	29
	Rated work oil flow	L/min	320
	Hydraulic oil tank capacity	L	1000
Mass	Complete vehicle mass	kg	52840
	Front axle load	kg	27760
	Rear axle load	kg	25080
	Max. travel speed (Forwards / backwards)	km/h	36/36
Travel	Wheelbase	mm	4150
	Treads (Front / rear)	mm	2632

Overall View (Unit: Metric mm)



Lifting Height Chart



Lifting Capacity Tables

On Outriggers-Fully Extended

12500mm				16214mm				19929mm				23643mm			
LOAD RADIUS (mm)	BOOM ANGLE (deg)	OVER FRONT (kg)	360° (kg)	LOAD RADIUS (mm)	BOOM ANGLE (deg)	OVER FRONT (kg)	360° (kg)	LOAD RADIUS (mm)	BOOM ANGLE (deg)	OVER FRONT (kg)	360° (kg)	LOAD RADIUS (mm)	BOOM ANGLE (deg)	OVER FRONT (kg)	360° (kg)
3000	70.0	75000	75000	3000	74.8	44860	44860								
3500	67.4	75000	75000	3500	72.9	44860	44860								
4000	64.8	68400	68400	4000	71.0	44860	44860								
4500	62.2	61650	61650	4500	69.1	44860	44860	4500	73.2	34450	34450				
5000	59.5	55950	55950	5000	67.1	44860	44860	5000	71.6	32950	32950				
5500	56.6	51100	51100	5500	65.2	43550	43550	5500	70.1	31590	31590	5500	73.4	24700	24700
6000	53.7	46900	46900	6000	63.1	42050	42050	6000	68.5	30340	30340	6000	72.1	23750	23750
6500	50.6	43200	43200	6500	61.1	40650	40650	6500	67.0	29200	29200	6500	70.8	22850	22850
7000	47.4	39990	39990	7000	59.0	39400	39400	7000	65.4	28150	28150	7000	69.5	22050	22050
7500	44.0	36090	35420	7500	56.8	37040	36350	7500	63.7	27200	27200	7500	68.2	21300	21300
8000	40.3	31340	30780	8000	54.6	32210	31650	8000	62.1	26300	26300	8000	66.8	20600	20600
9000	31.6	24520	24120	9000	49.9	25290	24890	9000	58.7	24650	24650	9000	64.1	19350	19350
10000	19.0	19900	19590	10000	44.9	20580	20260	10000	55.2	20870	20550	10000	61.3	18250	18250
10430	0.0	15490	15490	11000	39.3	17160	16900	11000	51.4	17430	17170	11000	58.5	17250	17250
				12000	32.8	14570	14360	12000	47.5	14830	14610	12000	55.5	15080	14860
				14000	10.5	10960	10800	14000	38.7	11150	10990	14000	49.2	11370	11210
				14137	0.0	10840	10690	16000	27.4	8700	8570	16000	42.2	8880	8750
								17847	0.0	7190	7090	18000	33.9	7100	7000
												20000	23.0	5790	5700
												21558	0.0	5080	5000

Lifting Capacity Tables

On Outriggers-Fully Extended

27357mm				31071mm				34786mm				38500mm			
LOAD RADIUS (mm)	BOOM ANGLE (deg)	OVER FRONT (kg)	360° (kg)	LOAD RADIUS (mm)	BOOM ANGLE (deg)	OVER FRONT (kg)	360° (kg)	LOAD RADIUS (mm)	BOOM ANGLE (deg)	OVER FRONT (kg)	360° (kg)	LOAD RADIUS (mm)	BOOM ANGLE (deg)	OVER FRONT (kg)	360° (kg)
6500	73.5	19500	19500												
7000	72.4	18850	18850												
7500	71.3	18200	18200	7500	73.6	15740	15740								
8000	70.2	17600	17600	8000	72.6	15240	15240								
9000	67.9	16550	16550	9000	70.7	14350	14350	9000	72.8	12300	12300				
10000	65.6	15590	15590	10000	68.7	13600	13600	10000	71.1	11700	11700	10000	73.0	10600	10600
11000	63.2	14800	14800	11000	66.7	12850	12850	11000	69.3	11150	11150	11000	71.4	10150	10150
12000	60.8	14050	14050	12000	64.6	12250	12250	12000	67.5	10600	10600	12000	69.8	9700	9700
14000	55.8	11430	11270	14000	60.4	11150	11150	14000	63.9	9750	9750	14000	66.6	8450	8450
16000	50.4	8930	8810	16000	56.0	9090	8970	16000	60.1	9000	8980	16000	63.3	7400	7400
18000	44.6	7150	7050	18000	51.3	7290	7190	18000	56.1	7300	7200	18000	59.8	6550	6550
20000	38.0	5820	5730	20000	46.3	5940	5850	20000	52.0	5950	5860	20000	56.3	5850	5850
22000	30.1	4790	4720	22000	40.8	4900	4820	22000	47.6	4910	4830	22000	52.6	5000	4920
24000	19.3	4000	3940	24000	34.5	4070	4000	24000	42.8	4070	4010	24000	48.6	4160	4090
25270	0.0	3680	3620	26000	26.9	3400	3340	26000	37.6	3390	3330	26000	44.4	3470	3410
				28000	16.1	2860	2810	28000	31.5	2840	2780	28000	39.9	2890	2840
				28983	0.0	2700	2650	30000	24.1	2380	2330	30000	34.8	2420	2370
								32000	12.9	2020	1970	32000	29.0	2010	1970
								32696	0.0	1970	1920	34000	21.7	1680	1630
												36000	9.7	1410	1370
												36409	0.0	1410	1370

Lifting Capacity Tables

On Tires

12500mm					16214mm				
LOAD RADIUS (mm)	BOOM ANGLE (deg)	360° (kg)	OVER FONT (kg)	FRONT DRIVING (kg)	LOAD RADIUS (mm)	BOOM ANGLE (deg)	360° (kg)	OVER FONT (kg)	FRONT DRIVING (kg)
3000	70.0	22070	35450	28500	3000	74.8	22540	35850	28900
3500	67.4	18800	31600	25210	3500	72.9	19350	32050	25600
4000	64.8	16270	28440	22440	4000	71.0	16790	28850	22900
4500	62.2	14120	25720	20170	4500	69.1	14640	26180	20630
5000	59.5	12410	23430	18230	5000	67.1	12940	23890	18640
5500	56.6	10890	21450	16500	5500	65.2	11440	21900	16950
6000	53.7	9670	19730	15030	6000	63.1	10190	20180	15520
6500	50.6	8570	18170	13770	6500	61.1	9070	18630	14230
7000	47.4	7610	16840	12640	7000	59.0	8140	17270	13070
7500	44.0	6660	15280	11590	7500	56.8	7230	15890	12090
8000	40.3	5730	13590	10690	8000	54.6	6280	14170	11170
9000	31.6	4250	10950	9110	9000	49.9	4760	11490	9590
10000	19.0	3130	9010	7630	10000	44.9	3600	9500	8100
10430	0.0	2800	8430	7050	11000	39.3	2680	7970	6570
					12000	32.8	1950	6760	5370
					14000	10.5		5000	3620
					14137	0.0		4960	3580

Lifting Capacity Tables

On Tires

19929mm					23643mm					27357mm				
LOAD RADIUS (mm)	BOOM ANGLE (deg)	360° (kg)	OVER FONT (kg)	FRONT DRIVING (kg)	LOAD RADIUS (mm)	BOOM ANGLE (deg)	360° (kg)	OVER FONT (kg)	FRONT DRIVING (kg)	LOAD RADIUS (mm)	BOOM ANGLE (deg)	360° (kg)	OVER FONT (kg)	FRONT DRIVING (kg)
4500	73.2	14810	26310	20750										
5000	71.6	13110	24010	18800										
5500	70.1	11610	22050	17140	5500	73.4	11810	22200	17290					
6000	68.5	10350	20320	15660	6000	72.1	10550	20490	15840					
6500	67.0	9290	18820	14410	6500	70.8	9470	18980	14570	6500	73.5	9490	19010	14590
7000	65.4	8350	17450	13240	7000	69.5	8540	17650	13440	7000	72.4	8560	17630	13460
7500	63.7	7440	16110	12250	7500	68.2	7670	16350	12450	7500	71.3	7690	16380	12420
8000	62.1	6490	14390	11330	8000	66.8	6710	14620	11510	8000	70.2	6740	14650	11540
9000	58.7	4970	11700	9790	9000	64.1	5180	11920	9970	9000	67.9	5220	11960	10000
10000	55.2	3800	9710	8300	10000	61.3	4010	9920	8510	10000	65.6	4050	9960	8550
11000	51.4	2880	8170	6760	11000	58.5	3080	8370	6970	11000	63.2	3120	8410	7000
12000	47.5	2130	6950	5550	12000	55.5	2330	7140	5740	12000	60.8	2370	7190	5780
14000	38.7	1010	5150	3750	14000	49.2	1190	5320	3920	14000	55.8	1230	5360	3960
16000	27.4		3890	2500	16000	42.2		4030	2640	16000	50.4		4080	2670
17847	0.0		3130	1750	18000	33.9		3090	1700	18000	44.6		3130	1720
					20000	23.0		2380		20000	38.0		2400	1000
					21558	0.0		2020		22000	30.1		1840	
										24000	19.3		1400	
										25270	0.0		1250	

Lifting Capacity Tables

On Outriggers-Retracted

12500mm			16214mm			19929mm			23643mm		
LOAD RADIUS (mm)	BOOM ANGLE (deg)	360° (kg)	LOAD RADIUS (mm)	BOOM ANGLE (deg)	360° (kg)	LOAD RADIUS (mm)	BOOM ANGLE (deg)	360° (kg)	LOAD RADIUS (mm)	BOOM ANGLE (deg)	360° (kg)
3000	70.0	75000	3000	74.8	44860						
3500	67.4	68800	3500	72.9	44860						
4000	64.8	61100	4000	71.0	44860						
4500	62.2	54750	4500	69.1	44860	4500	73.2	34450			
5000	59.5	44400	5000	67.1	44860	5000	71.6	32950			
5500	56.6	35960	5500	65.2	36910	5500	70.1	31590	5500	73.4	24700
6000	53.7	29980	6000	63.1	30850	6000	68.5	30340	6000	72.1	23750
6500	50.6	25530	6500	61.1	26340	6500	67.0	26640	6500	70.8	22850
7000	47.4	22090	7000	59.0	22850	7000	65.4	23140	7000	69.5	22050
7500	44.0	19340	7500	56.8	20070	7500	63.7	20350	7500	68.2	20630
8000	40.3	17110	8000	54.6	17800	8000	62.1	18070	8000	66.8	18350
9000	31.6	13690	9000	49.9	14330	9000	58.7	14590	9000	64.1	14840
10000	19.0	11220	10000	44.9	11800	10000	55.2	12040	10000	61.3	12290
10430	0.0	10470	11000	39.3	9870	11000	51.4	10110	11000	58.5	10340
			12000	32.8	8360	12000	47.5	8590	12000	55.5	8810
			14000	10.5	6190	14000	38.7	6360	14000	49.2	6560
			14137	0.0	6130	16000	27.4	4830	16000	42.2	4990
						17847	0.0	3900	18000	33.9	3850
									20000	23.0	3000
									21558	0.0	2550

Lifting Capacity Tables

On Outriggers-Retracted

27357mm			31071mm			34786mm			38500mm		
LOAD RADIUS (mm)	BOOM ANGLE (deg)	360° (kg)	LOAD RADIUS (mm)	BOOM ANGLE (deg)	360° (kg)	LOAD RADIUS (mm)	BOOM ANGLE (deg)	360° (kg)	LOAD RADIUS (mm)	BOOM ANGLE (deg)	360° (kg)
6500	73.5	19500									
7000	72.4	18850									
7500	71.3	18200	7500	73.6	15740						
8000	70.2	17600	8000	72.6	15240						
9000	67.9	14890	9000	70.7	14350	9000	72.8	12300			
10000	65.6	12340	10000	68.7	12530	10000	71.1	11700	10000	73.0	10600
11000	63.2	10390	11000	66.7	10570	11000	69.3	10580	11000	71.4	10150
12000	60.8	8860	12000	64.6	9040	12000	67.5	9040	12000	69.8	9120
14000	55.8	6620	14000	60.4	6770	14000	63.9	6780	14000	66.6	6870
16000	50.4	5050	16000	56.0	5190	16000	60.1	5200	16000	63.3	5300
18000	44.6	3890	18000	51.3	4030	18000	56.1	4040	18000	59.8	4130
20000	38.0	3020	20000	46.3	3140	20000	52.0	3150	20000	56.3	3240
22000	30.1	2340	22000	40.8	2440	22000	47.6	2450	22000	52.6	2540
24000	19.3	1820	24000	34.5	1880	24000	42.8	1890	24000	48.6	1970
25270	0.0	1640	26000	26.9	1430	26000	37.6	1430	26000	44.4	1500
			28000	16.1	1080	28000	31.5	1050	28000	39.9	1110

Lifting Capacity Tables

On Outriggers-Retracted

12500mm			16214mm			19929mm			23643mm		
LOAD RADIUS (mm)	BOOM ANGLE (deg)	360° (kg)	LOAD RADIUS (mm)	BOOM ANGLE (deg)	360° (kg)	LOAD RADIUS (mm)	BOOM ANGLE (deg)	360° (kg)	LOAD RADIUS (mm)	BOOM ANGLE (deg)	360° (kg)
3000	70.0	51050	3000	74.8	44860						
3500	67.4	37080	3500	72.9	38020						
4000	64.8	28670	4000	71.0	29510						
4500	62.2	23060	4500	69.1	23840	4500	73.2	24080			
5000	59.5	19060	5000	67.1	19780	5000	71.6	20020			
5500	56.6	16050	5500	65.2	16740	5500	70.1	16970	5500	73.4	17240
6000	53.7	13710	6000	63.1	14370	6000	68.5	14600	6000	72.1	14860
6500	50.6	11840	6500	61.1	12480	6500	67.0	12710	6500	70.8	12950
7000	47.4	10310	7000	59.0	10930	7000	65.4	11150	7000	69.5	11390
7500	44.0	9040	7500	56.8	9640	7500	63.7	9860	7500	68.2	10100
8000	40.3	7970	8000	54.6	8550	8000	62.1	8770	8000	66.8	9000
9000	31.6	6260	9000	49.9	6810	9000	58.7	7020	9000	64.1	7250
10000	19.0	4980	10000	44.9	5480	10000	55.2	5690	10000	61.3	5910
10430	0.0	4600	11000	39.3	4440	11000	51.4	4650	11000	58.5	4850
			12000	32.8	3600	12000	47.5	3800	12000	55.5	4000
			14000	10.5	2380	14000	38.7	2540	14000	49.2	2710
			14137	0.0	2360	16000	27.4	1640	16000	42.2	1800
						17847	0.0	1130	18000	33.9	1110

Lifting Capacity Tables

On Outriggers-Retracted

27357mm			31071mm			34786mm			38500mm		
LOAD RADIUS (mm)	BOOM ANGLE (deg)	360° (kg)	LOAD RADIUS (mm)	BOOM ANGLE (deg)	360° (kg)	LOAD RADIUS (mm)	BOOM ANGLE (deg)	360° (kg)	LOAD RADIUS (mm)	BOOM ANGLE (deg)	360° (kg)
6500	73.5	12980									
7000	72.4	11430									
7500	71.3	10130	7500	73.6	10310						
8000	70.2	9040	8000	72.6	9210						
9000	67.9	7290	9000	70.7	7460	9000	72.8	7460			
10000	65.6	5950	10000	68.7	6110	10000	71.1	6120	10000	73.0	6190
11000	63.2	4900	11000	66.7	5060	11000	69.3	5060	11000	71.4	5130
12000	60.8	4050	12000	64.6	4200	12000	67.5	4210	12000	69.8	4280
14000	55.8	2760	14000	60.4	2910	14000	63.9	2920	14000	66.6	3000
16000	50.4	1840	16000	56.0	1980	16000	60.1	1990	16000	63.3	2070
18000	44.6	1150	18000	51.3	1280	18000	56.1	1290	18000	59.8	1380

Lifting Capacity Tables

Outriggers-fully Extended

10m offsetable Jib			10m offsetable Jib			10m offsetable Jib		
0° Offset			20° Offset			40° Offset		
BOOM ANGLE (deg)	LOAD RADIUS (mm)	360° (kg)	BOOM ANGLE (deg)	LOAD RADIUS (mm)	360° (kg)	BOOM ANGLE (deg)	LOAD RADIUS (mm)	360° (kg)
76	9634	6000	76	12459	3050	76	14684	1990
74	11269	5800	74	14049	2850	74	16197	1890
72	12888	5600	72	15619	2700	72	17689	1850
70	14489	5050	70	17168	2550	70	19156	1800
68	16070	4500	68	18693	2450	68	20597	1750
66	17628	3990	66	20192	2350	66	22010	1700
64	19163	3600	64	21665	2250	64	23394	1650
62	20671	3250	62	23108	2150	62	24747	1650
60	22152	2950	60	24521	2050	60	26068	1600
58	23603	2700	58	25902	1990	58	27354	1600
56	25023	2450	56	27248	1940	56	28604	1550
54	26410	2250	54	28558	1850	54	29816	1550
52	27762	2100	52	29832	1800	52	30990	1500
50	29078	1890	50	31066	1650	50	32124	1500
48	30356	1750	48	32260	1550	48	33215	1450
46	31594	1630	46	33412	1450	46	34264	1350
44	32791	1440	44	34521	1350	44	35269	1300
42	33946	1270	42	35585	1210	42	36228	1180
40	35057	1120	40	36603	1070	40	37140	1040
38	36122	990	38	37574	940	38	38004	920

Lifting Capacity Tables

Outriggers-fully Extended

17m offsetable Jib			17m offsetable Jib			17m offsetable Jib		
0° Offset			20° Offset			40° Offset		
BOOM ANGLE (deg)	LOAD RADIUS (mm)	360° (kg)	BOOM ANGLE (deg)	LOAD RADIUS (mm)	360° (kg)	BOOM ANGLE (deg)	LOAD RADIUS (mm)	360° (kg)
76	11327	3500	76	16372	1650	76	20345	1050
74	13198	3350	74	18162	1550	74	21999	990
72	15051	3000	72	19927	1450	72	23623	990
70	16883	2700	70	21666	1400	70	25216	940
68	18691	2450	68	23375	1300	68	26775	900
66	20475	2250	66	25053	1250	66	28300	900
64	22230	2100	64	26699	1200	64	29787	850
62	23956	1940	62	28309	1150	62	31235	850
60	25651	1800	60	29882	1100	60	32643	800
58	27311	1700	58	31416	1050	58	34009	800
56	28936	1550	56	32909	990	56	35330	800
54	30523	1500	54	34360	940	54	36606	750
52	32070	1400	52	35766	940	52	37835	750
50	33576	1250	50	37126	900	50	39015	750
48	35038	1150	48	38438	850	48	40145	750
46	36455	1050	46	39701	850	46	41224	700
44	37825	940	44	40913	800	44	42249	700
42	39146	900	42	42073	750	42	43221	650
40	40417	800	40	43179	650	40	44138	650
38	41636	750	38	44229	600	38	44998	600